

Sample Name:
Retatrutide

Analysis Equipment:
LCMSMS-UV (Qtof positive ESI)

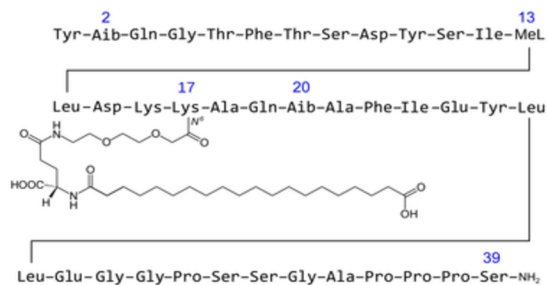
Sampling Date: 05/10/2026
Report Date: 05/18/2026

REPORT OF ANALYSIS

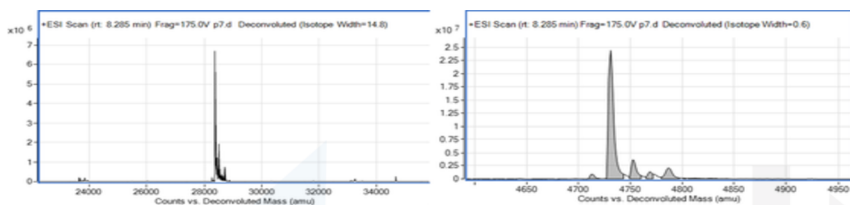
Product Name	Retatrutide	
Molecular weight	4731.33-4731.45 g/mol	
Molecular formula	C221H342N46O68	
Sequence	Tyr-(Aib)-Gln-Gly-Thr-Phe-Thr-Ser-Asp-Tyr-Ser-Ile-(α -Me-Leu)-Leu-Asp-Lys-(diacid-C20-gamma-Glu-(AEEA)-Lys)-Ala-Gln-(Aib)-Ala-Phe-Ile-Glu-Tyr-Leu-Leu-Glu-Gly-Gly-Pro-Ser-Ser-Gly-Ala-Pro-Pro-Pro-Ser-NH ₂	
Test Request	Specification	Result
Appearance	White lyophilized powder	Complies
Peptide Purity by LC (%)	>= 98.5%	98.80%
Peptide potency (mg/vial)	30 \pm 3	31.65
Identification by LCMSMS	4731.33-4731.5 g·mol ⁻¹	[M+H] ⁺ :4731.3
Conclusions	Conforms to standard	Complies

Test	Expectation 30 \pm 3	Result	Method
Potency (mg/vial)	Conform to standards	31.65	HPLC-UV-MS
Identification		14194.4: m/z [3M] ⁺ ; 2366.2481: m/z [M+2H] ²⁺ ; 577.8334 [M+2H] ³⁺ ; 1183.6257m/z [M+3H] ⁴⁺	LC-MS/MS- positive

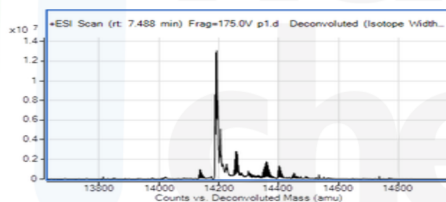
Structure (Sequence)



Authentic Identification by Qtof



	m/z	Exact MW
6M	28387.4740	4731.2457
M	4731.5520	4731.5520



	m/z	Cal. MW	H+
M	4731.2	4731.2	0
[M+H] ⁺ 2	2366.1876	4731.3752	2
[M+2H] ⁺ 3	1577.7712	4731.3136	3
[M+3H] ⁺ 4	1183.5653	4731.2612	4
[M+4H] ⁺ 5	947.0438	4731.219	5

